

* photo: coffee/tea maker application example

FEATURES

- Contact Resistance: 100 mΩ max.
- Insulation Resistance: 100 MΩ min.
- Operating Life: 100.000 cycles
- Switch travel: 0.25 ± 0.1 mm
- Dielectric Strength: 250 VAC for 1 minute
- Bounce: less than 100 msec.
- Operating Temp.: -20 °C to +70 °C
- Rating: 12V D.C. 50mA

TYPICAL APPLICATIONS

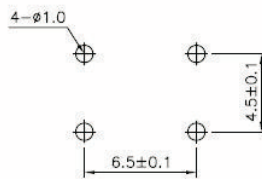
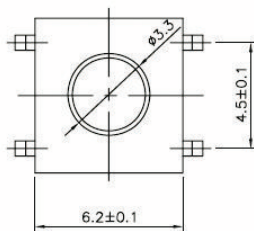
This Tact switch together with an appropriate shaft allows our PT-15V to act as single or multifunction rotary control. Typical applications are Toaster ovens and Vacuum cleaners but the same idea can be applied to any device where a push on/off or function select is required in conjunction with an absolute rotary up/down or power control.

HOW TO ORDER

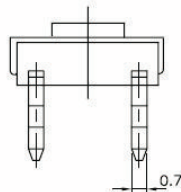
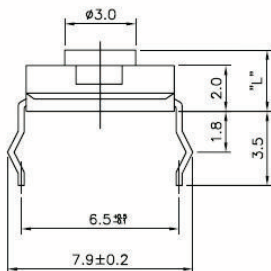
TS	1126	P	520	C
Series	Mounting Method	Terminals style	Operating Force	Switch Height/colour
TS	1126 = with terminals 1100 = SMD	S = no crimping P = crimping - = SMD	100 = 100gf 160 = 160gf 260 = 260gf 520 = 520gf	A = 2 mm / red B = 2.3 mm / black C = 2.5 mm / blue D = 3.1 mm / brown <small>(drawing dimension "L")</small>

DIMENSIONS

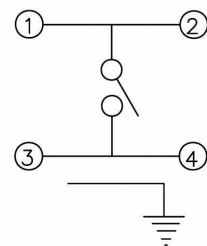
TS-1126P



P.C.B. Hole Detail



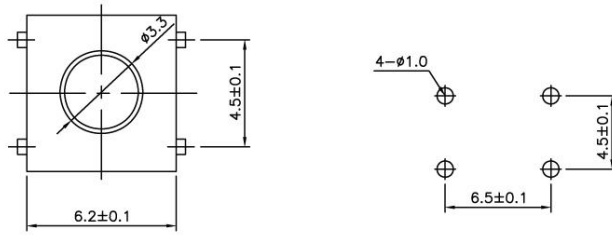
Circuit Diagram



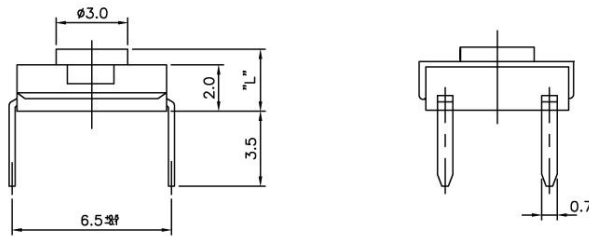
Common to all models

DIMENSIONS

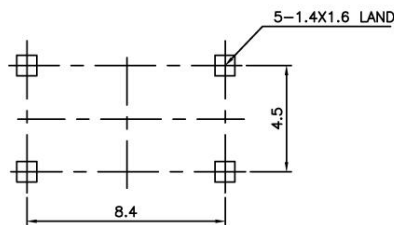
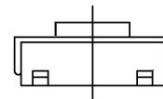
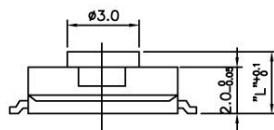
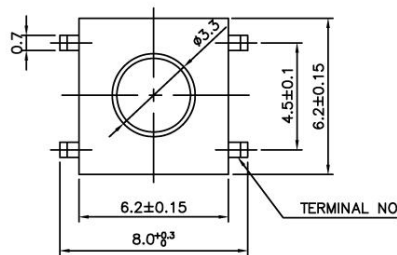
TS-1126S



P.C.B. Hole Detail



TS-1110



P.C.B. Hole Detail